

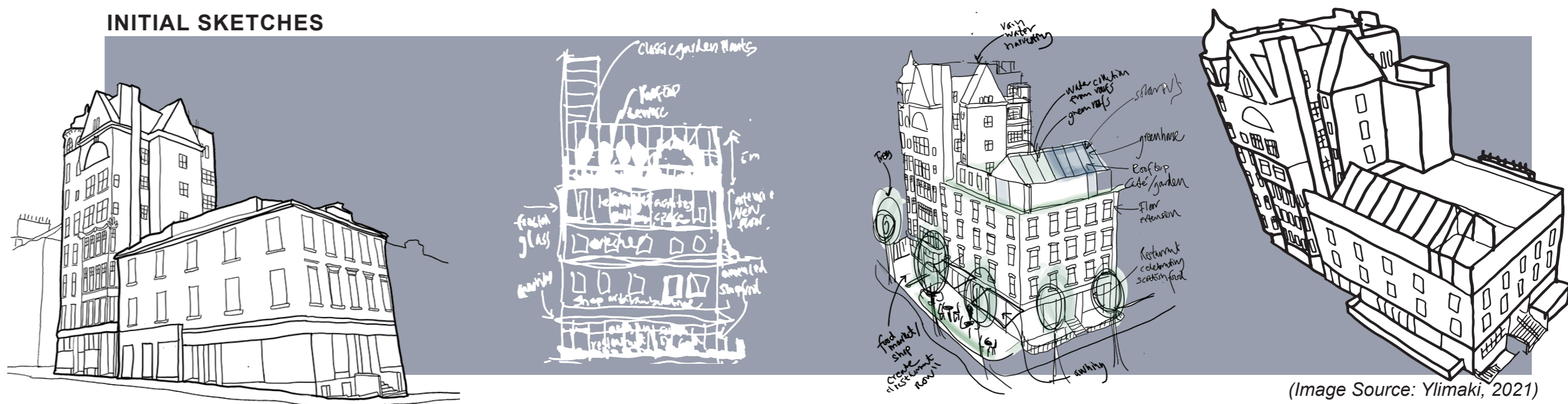
THE LION CHAMBERS

PROPOSED CREATIVE CO-WORKING & LEARNING SPACE IN GLASGOW

Heritage Roots
- Reflect, Celebrate & Revive -

DESIGN BRIEF - CONCEPT & PRECEDENTS

MSc ARCHITECTURAL DESIGN FOR THE CONSERVATION OF BUILT HERITAGE UNIVERSITY OF STRATHCLYDE - GLASGOW
CONSERVATION DESIGN PROJECT - ELINA MARIA YLIMAKI - 2020 / 2021



VISION STATEMENT

To celebrate the currently hidden aesthetics & beauty of the Lion Chambers & the Georgian corner building because of its historic and significant values. To bring it to modern standards and into a sustainable future with seasonal food production (vertical growing, aquaponics and a greenhouse), albeit on a small scale.

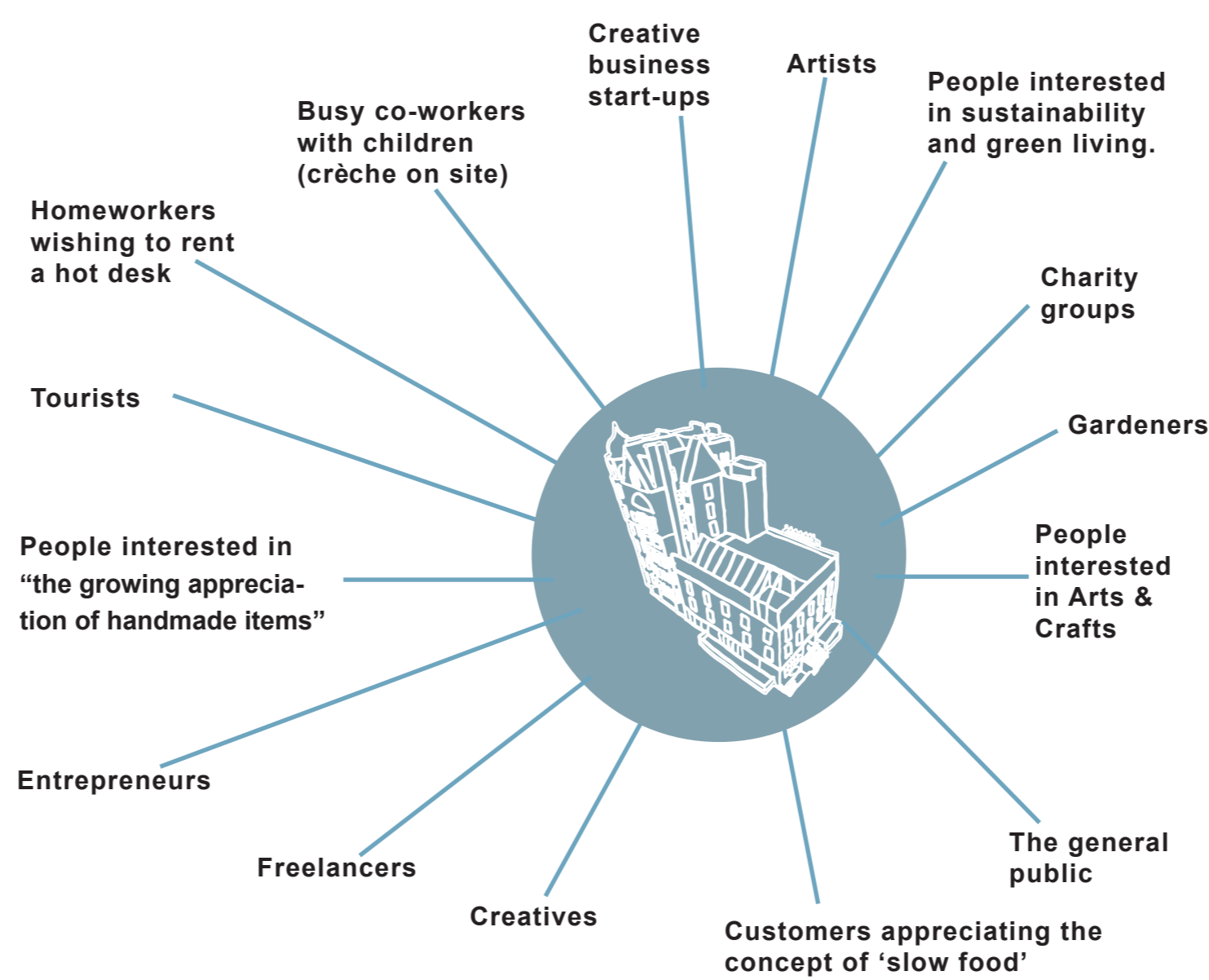
A proposal to push the envelope where conservation meets sustainability and make it a green role model with a sensitive approach to its original form and fabric. To bring it back to use as a mixed-use scheme with creative co-working space, apartments, eateries and a garden terrace.

PROPOSED USE

- Mixed use: Co-working space, creative workshops, restaurants/bars etc.
- The Lion Chambers has 3 floors of co-working space with a crèche for busy entrepreneurs and 3 floors of apartments.
 - The Georgian building is used for creative learning studios and restaurant/bar at the ground floor / basement.
 - The new roof top garden with a greenhouse is at the top floor of the Georgian building, which supplies the restaurant and educates people about green living.
 - An additional extension with a tea room/ gallery combined is based at the top floor of the Georgian building.

The building will be open to both the general public and private use. The building is also for people visiting the serviced offices on a ad hoc basis. The restaurants and garden terrace are all public areas while the flats are private.

PROPOSED USERS OF THE BUILDINGS



PROGRAM

	LION CHAMBERS	GEORGIAN BUILDING
7	APARTMENT	NEW ROOFTOP GARDEN & GREENHOUSE
6	APARTMENT	NEW TEA ROOMS & BAR / GALLERY
	APARTMENT	NEW TEA ROOMS & BAR / GALLERY
4	CO-WORKING SPACE Meeting rooms & hot desks	NEW TEA ROOMS & BAR / GALLERY
3	CRÈCHE On site crèche for busy creative entrepreneurs	NEW TEA ROOMS & BAR / GALLERY
2	CO-WORKING SPACE Meeting rooms & hot desks	CREATIVE STUDIOS Learn craft skills, ceramics, jewellery, printing & painting.
1	CO-WORKING SPACE Meeting rooms & hot desks	CREATIVE STUDIOS Learn craft skills, ceramics, jewellery, printing & painting.
0	ZERO-WASTE SHOP Organic, bulk buy, plant based, plastic free delicatessen shop	ARTISAN RESTAURANT /CAFÉ Celebrating Scottish food, slow food movement
-1	PLANT ROOM	ARTISAN RESTAURANT /BAR Celebrating Scottish food, slow food movement

Proposed use: Serviced offices with co-working areas - (Source: Ylimaki, 2021)

ENCOURAGE CRAFT SKILLS

artisan

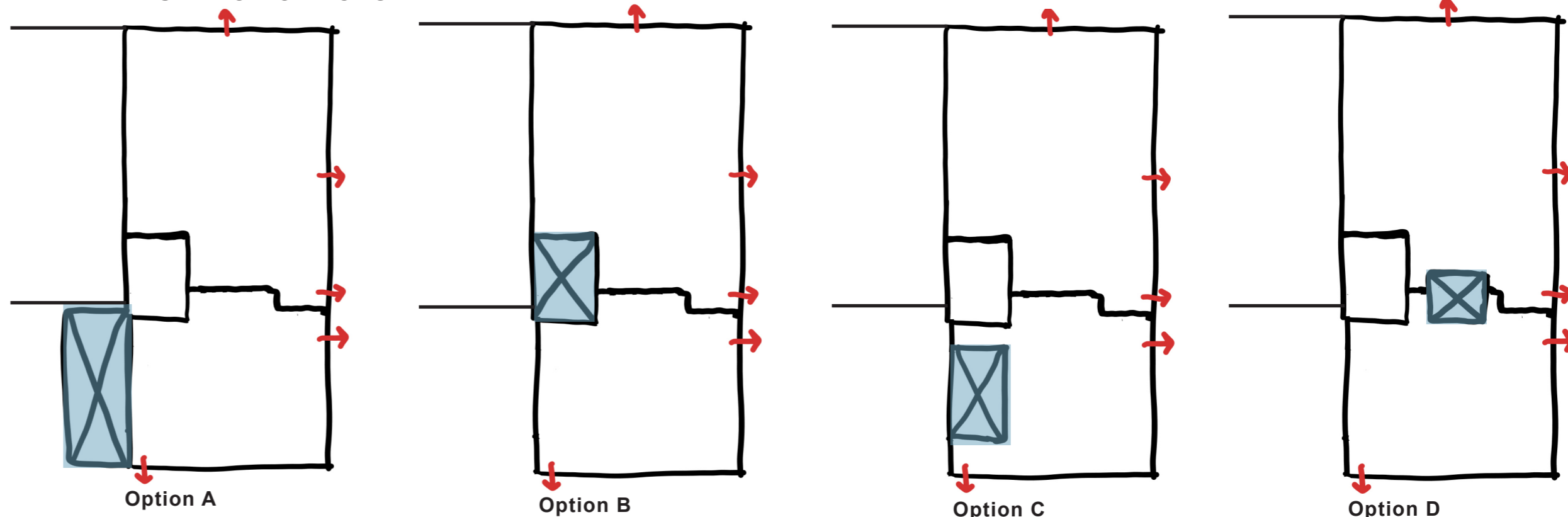
[a.tɪzən.tɪˈzɑːn]

NOUN

A worker in a skilled trade, especially one that involves making things by hand

"steet markets where local artisans display handwoven textiles, painted ceramics, and leather goods"
Synonyms: craftsman, craftswoman, craftperson, skilled worker, mechanic, technician, operative, maker, smith, wright, journeyman, artificer, handicraftsman, handicraftswoman (of food or drink) made in a traditional or non-mechanized way using high-quality ingredients. "Britain's artisan cheeses" - "the growing appreciation of artisan foods"

CIRCULATION OPTIONS



CONCEPT

CONSERVATION

CHANGE OF USE

"Change may be necessary to retain cultural significance, but is undesirable where it reduces cultural significance. The amount of change to a place and its use should be guided by the cultural significance of the place and its appropriate interpretation." Source: Article 15.1 in the Burra Charter.

REVERSABILITY

Changes which reduce cultural significance should be reversible, and be reversed when circumstances permit. Source: Article 15.2 in the Burra Charter

MATERIALS & CRAFT SKILLS

Appreciate the materials and craft skills.

RECORD & DOCUMENT

NEW DESIGN COMPLEMENT TO OLD DESIGN

RECYCLE & REUSE

Any removed concrete panels, could for example be recycled as bar tables

TRANSPORT



Encourage Cycling

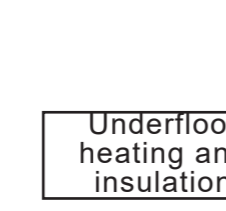


Electric vehicle Charging points

VENTILATION

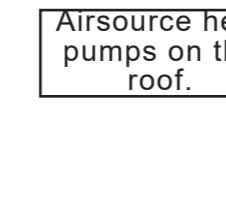


Natural Ventilation & Mechanical Ventilation



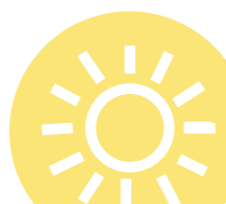
Underfloor heating and insulation

Energy efficient LED Lights

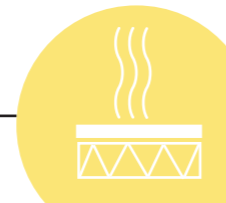


Airsource heat pumps on the roof.

ENERGY & HEATING



Use of photovoltaics. Excess energy sold to the grid.



Seasonal vegetables grown in the green house



Aquaponic system on a smaller scale

WATER



Use harvested rainwater in the toilets



Rainwater harvesting and irrigation for plants and vegetables

FOOD



Some food production met on site. Seasonal vegetables grown in the green house



Seasonal vegetables grown in the green house



Aquaponic system on a smaller scale



Zero waste shop selling Organic, bulk buy, plant based, plastic free products. Sourced locally.

OCCUPANT



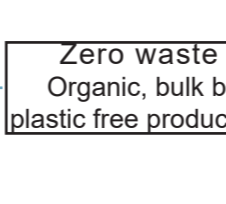
Public (grey) vs private space (yellow)



Connect the two buildings with a central stair case



Fit for the future with flexible space.



Zero waste shop selling Organic, bulk buy, plant based, plastic free products. Sourced locally.

WELLBEING



Introduce plants and greenery to the interiors and exteriors. Encourage bees and insects on green roofs

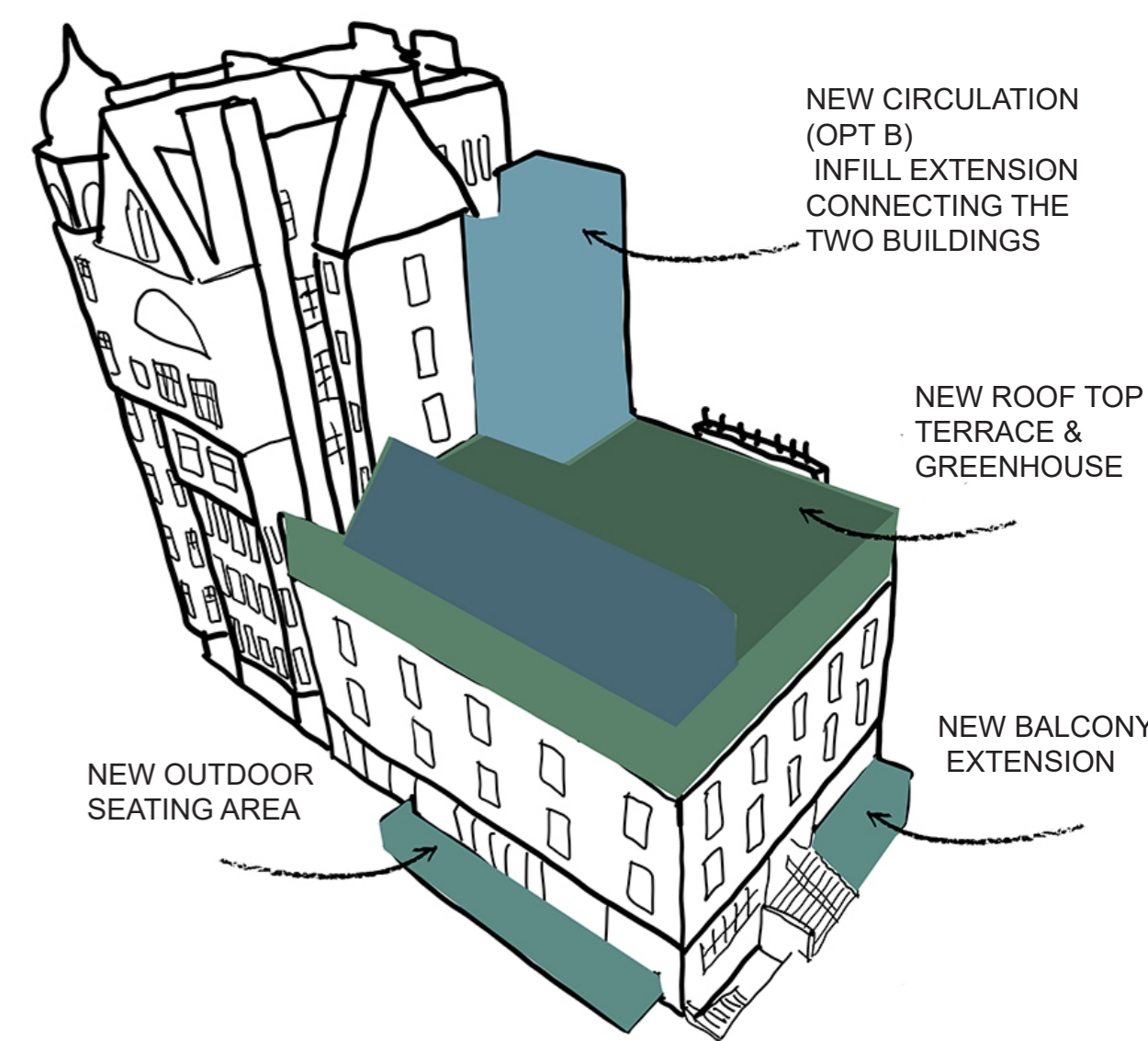


Introduce colours in harmony with splashes of colour.



Use of non-toxic materials. Preferably use of natural materials.

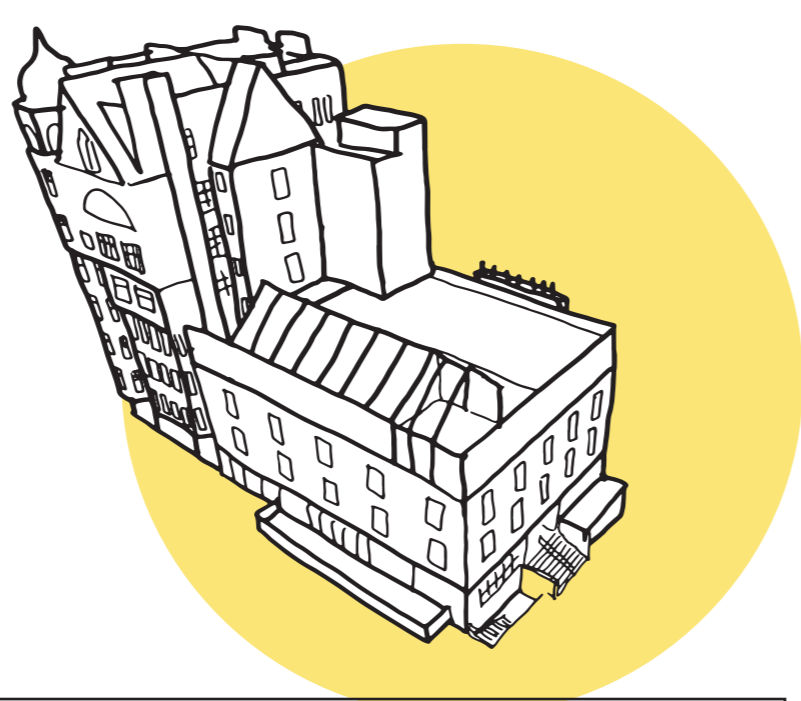
PROPOSED EXTENSIONS



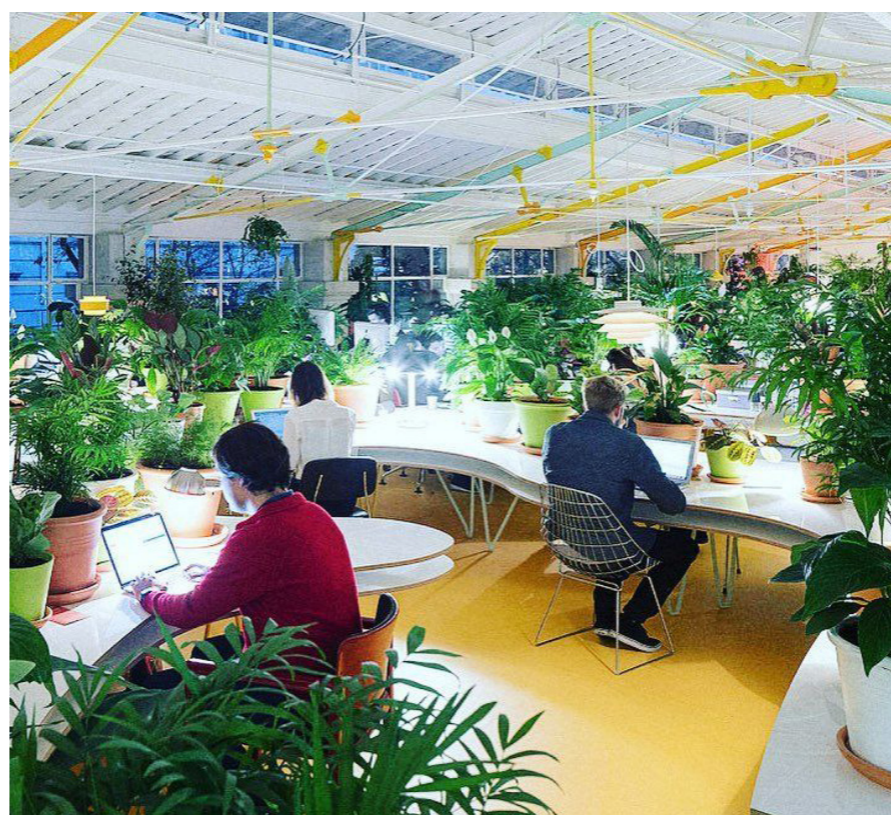
PRECEDENTS



National Theatre Southbank, London
The regeneration of one of UK's most important Modernist buildings, which opened in 1976 as the National Theatre, included main transformations like closer connection to the river walk and its neighbourhood, a new square, regeneration of the main entrance and foyer and a new production building that houses workshop, production offices, design studios etc. Source: <https://www.haworthtompkins.com/work/national-theatre>



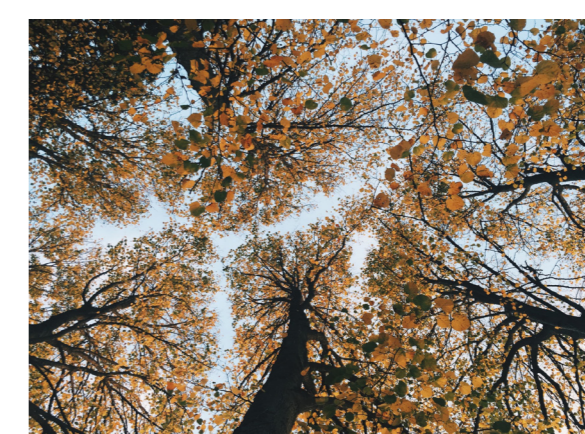
Conservation of an old building and putting it back to new use, is the ultimate recycling project!



Second Home co-working space, Portugal
Example of using plants for better and healthier environments in office interiors. "Second home" co-working space in Portugal - designed by Selgas Cano. (Source: www.Secondhome.io)

MATERIAL PRECEDENT

Exterior facade concept inspired by the original site it was built on.
The site used to possibly be woodland.
The tree concept to be translated into facade ideas.
To bring back woodland & greenery in a symbolic manner.



Heritage ROOTS and the tree mesh. Bring back nature to the City of Glasgow. (Image Source: [Unsplash](http://www.unsplash.com) photo by Oli Gibbs)



Childcare facility in Paris by B+C Architects and E. D'Agostino conservation architect. Source: <http://www.bcarchitectes.com/>